



KÖBO

The Chain People

Hand in Hand with the **TIMBER INDUSTRY**



WE HANDLE IT



KOBOL Industrial Park Wuppertal

About KOBOL

Since 1894 KOBOL has been the name for first-class chain technology. Our high-quality standards, constant innovation, state-of-the-art manufacturing, and attention to product safety have made KOBOL a leading supplier for chains and sprockets. Today KOBOL specialists work around the globe to provide effective and innovative solutions:

We are: "The Chain People"

INTERNATIONAL KNOW-HOW FOR ALL INDUSTRIES

KOBOL has production facilities in Germany, Poland and China. Logistics and distribution are internationally aligned. We are your partner with experience, competence and focus on the future.

KOBOL develops and produces cross-industry chains for diverse sectors

1. steel industry

2. bulk handling industry

3. automotive industry

4. wood industry

5. water treatment industry

6. food industry

7. escalator industry

8. supply and fit

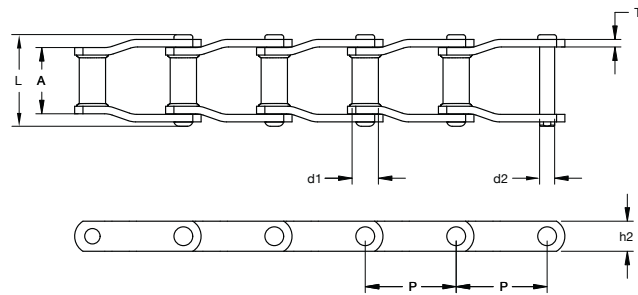
9. sprockets for all specialized segments and systems

WELDED & EXTRA HEAVY DUTY WELDED STEEL CHAIN

Welded steel chains are engineered for demanding applications where durability and reliability are crucial. These chains are particularly well-suited for environments that endure significant stress and abrasive conditions. KOBO chains are a prime example of advanced chain technology designed to meet these rigorous demands.

KOBO chains are manufactured using robotic welding techniques for barrels and link plates. This precise welding process ensures exceptional strength and consistency, allowing chains to effectively handle shock loads and resist wear over time.

In addition to the welding process, KOBO chains are fitted with press-fit pins and riveted components. This combination of manufacturing techniques further enhances the robustness, providing superior resistance to the forces



and stresses encountered in tough applications. The press-fit pins ensure a secure fit, while the riveted connections add extra stability, making KOBO chains an excellent choice for industries where reliable performance is essential.

KOBO Chain No.	Pitch P	Outside Barrel Diameter d1	Length of Bearing A	Pin Diameter d2	Approx Overall Width L	Side Bar Height h2	Side Bar Thickness T	Approx. Tooth Face b1	Ultimate Strength Lbs	Allowable Working Load Lbs	Weight per ft Lbs/ Foot
WR 78	2.609	0.88	2	1/2	3	1 1/4	1/4	1	22,000	3,700	4.1
WH 78									33,000	5,500	
WR 82	3.075	1	2 1/4	9/16	3 3/8	1 1/4	1/4	1 1/8	30,000	5,000	4.7
WH 82									34,000	5,660	
WR 124	4.000	1 1/4	2 3/4	3/4	4 1/4	1 1/2	3/8	1 1/2	50,000	8,400	8
WH124									57,000	9,600	
WR 111	4.760	1 1/4	3 3/8	3/4	4 13/16	1 3/4	3/8	1 3/4	51,000	9,500	8.6
WH 111									60,000	12,000	
WR 106	6.000	1 1/4	2 3/4	3/4	4 1/4	1 1/2	3/8	1 1/2	50,000	8,400	6.5
WH 106									60,000	12,000	
WR 132	6.050	1 3/4	4 13/32	1	6 3/8	2	1/2	2 3/4	85,500	14,100	13.5
WH 132									122,000	20,300	
WR 150	6.050	1 3/4	4 13/32	1	6 1/2	2 1/2	1/2	2 3/4	120,000	19,000	15.5
WH 150									122,000	22,000	
WR 157	6.050	1 3/4	4 5/8	1 1/8	6 3/4	2 1/2	5/8	2 3/4	148,000	22,000	20
WH157									175,000	29,000	

KOBO Chain No.	Pitch P	Outside Barrel Diameter d1	Length of Bearing A	Pin Diameter d2	Approx Overall Width L	Side Bar Height h2	Side Bar Thickness T	Approx. Tooth Face b1	Ultimate Strength Lbs	Allowable Working Load Lbs	Weight per ft Lbs/ Foot
WH78XHD	2.609	1	2	9/16	3 3/8	1 1/4	3/8	1	35,000	6,000	6.3
WH82XHD	3.075	1 1/4	2 3/8	3/4	3 3/4	1 1/2	3/8	1 1/8	57,000	9,500	8.5
WH124XHD	4.063	1 5/8	3	1	4 7/8	2	1/2	1 1/2	122,000	20,400	14.6
WH106XHD	6.050	1 3/4	3	1	4 7/8	2	1/2	1 1/2	122,000	20,400	11.8
WH132XHD	6.050	1 3/4	4 11/16	1	6 3/4	2	5/8	2 3/4	122,000	20,400	15.3

WDH WELDED STEEL DRAG CHAINS

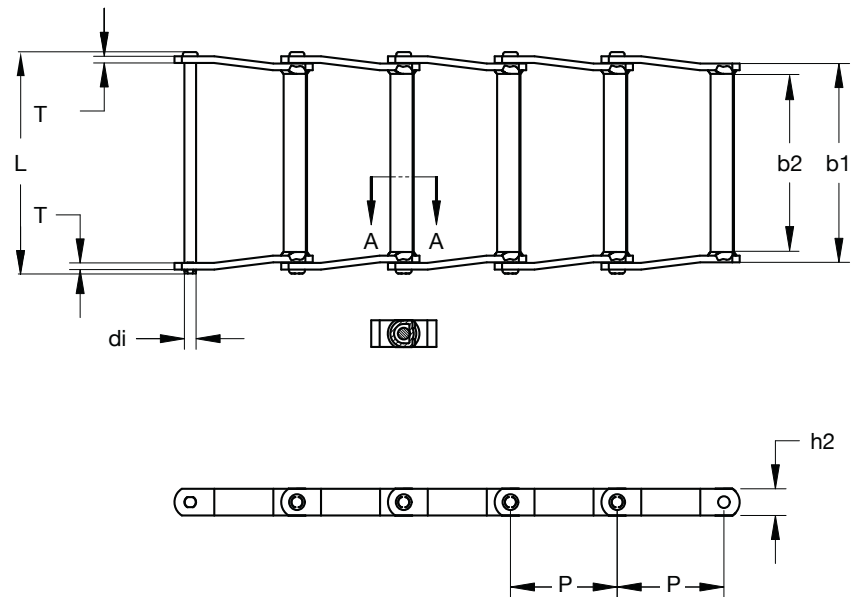
KOBO Wide Series chains, including the WDH Series, are supplied with heat-treated components as a standard. These chains are designed for applications where joint wear, barrel OD wear and sidebar wear are common concerns.

WDH Series chains feature through-hardened parts.

Induction-hardened pins are available as an option.

KOBO Welded Steel Chains and Welded Steel Drag Chains are produced with press-fit and riveted. The sidebar holes are punched and shaved to ensure complete contact between the pin and sidebar.

Full contact allows for better stress dissipation, eliminating the risk of chain cracking and premature elongation. We also offer fully heat-treated chains with all components through-hardened.



Application range for WDH Welded steel chains

Wood Yard

Refuse

Debarker infeed

and more...

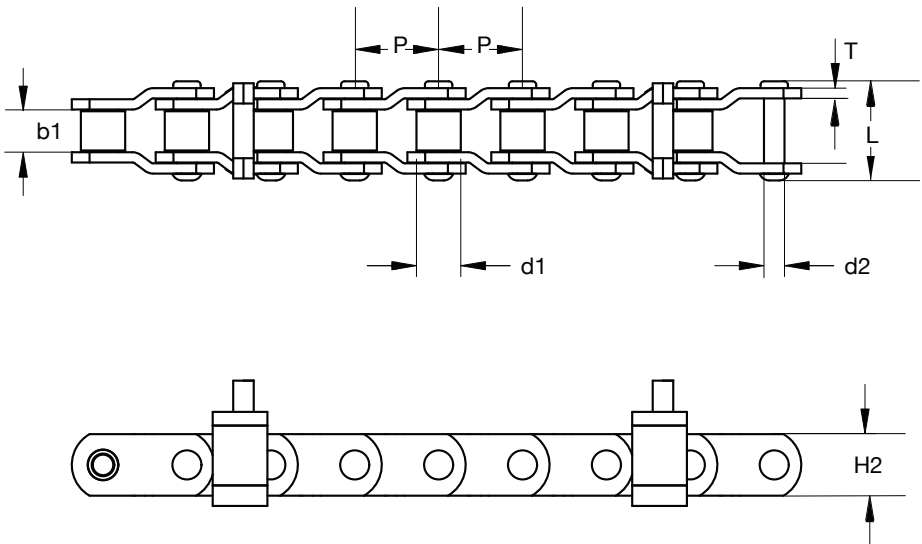
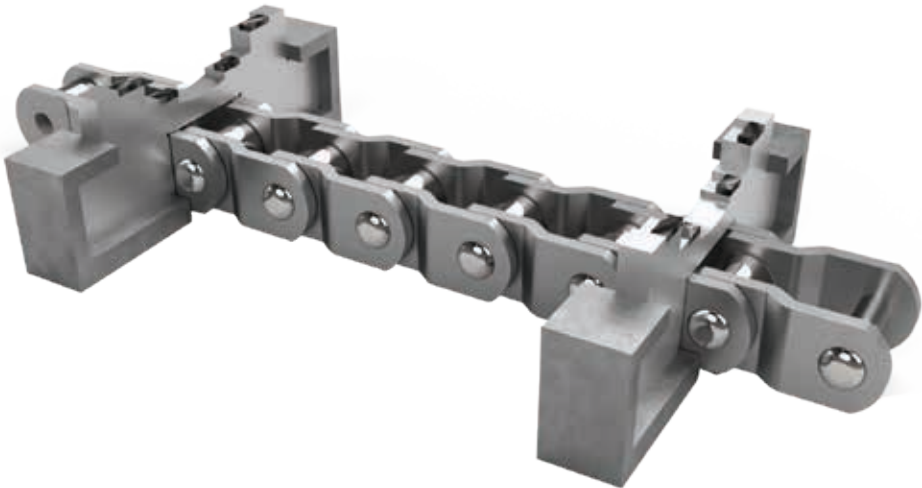
KOBO Chain No.	Pitch	Length of Bearing	Pin Diameter	Approx Overall Width	Side Bar Height	Side Bar Thickness	Maximum Sprocket Face	Ultimate Strength	Allowable Working Load	Weight Per Foot
	P	b2	d1	L	h2	T	b1	Lbs	Lbs	lbs/foot
WDH102	5	7 3/4	3/4	9 1/4	1 1/2	3/8	6 3/8	78,000	15,600	12
WDH104	6	5 3/8	3/4	6 3/4	1 1/2	3/8	4 1/4	54,000	10,800	8.6
WDH110	6	10 1/4	3/4	11 3/4	1 1/2	3/8	9	54,000	10,800	12
WDH112	8	10 1/4	3/4	11 3/4	1 1/2	3/8	9	54,000	10,800	10
WDH116	8	14 1/8	3/4	15 1/2	1 3/4	3/8	13	54,000	10,800	12.9
WDH120	6	10 1/4	7/8	12	2	1/2	8 3/4	85,000	17,000	10
WDH122	8	10 1/4	7/8	12	2	1/2	8 3/4	85,000	17,000	16
WDH480-7/8	8	12 3/4	7/8	14 1/2	2	1/2	11	85,000	17,000	17.2
WDH480-1	8	12 3/4	1	14 1/2	2	1/2	11	85,000	17,000	19.5

DLI AND SCANNER CHAIN

Chains with custom attachments are primarily used in sawmills at the primary breakdown stage, a critical phase of log processing. At this stage, logs are processed at high speeds, playing a crucial role in mill operations and maximizing profitable production.

Scanning: Logs are held firmly while moving at high speed to allow scanners to perform an initial read for further processing.

DLI and ELI: Double Length Infeed (DLI) systems are commonly placed right after the scanning stage, while Extended Length Infeed (ELI) conveyors follow. The log enters the DLI, where it is automatically rotated to provide another set of scanners with a second read, ensuring the best possible recovery or cut from the log. During this process, the log is tightly secured to the chain and attachments by hold-down rolls, all while traveling at speeds of up to 700 feet per minute.



Application range for DLI and Scanning Chains

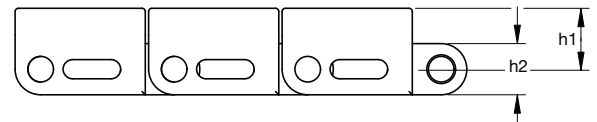
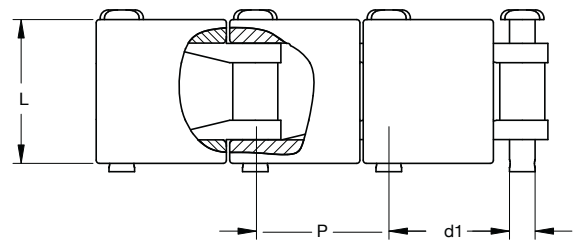
- Primary breakdown
- DLI
- Scanning
- and more...

KOBO Chain	Pitch P	Roller Diameter d1	Pin Diameter d2	Approx Overall L	Side Bar Height h2	Side Bar Thickness T	Maximum Sprocket b1	Ultimate Strength Lbs
KOBO 3011	3.067	1.62	0.75	3.94	2.25	3/8	1.50	110,000
KOBO 1242	4.063	1.75	0.875	4.9	2.25	1/2	1.90	140,000
KOBO 1245	4.037	1.78	0.938	5.1	2.375	9/16	1.90	170,000
KOBO 1205	4.037	1.78	0.938	4.8	2.5	1/2	2.12	100,000
KOBO 124N	4.073	1.75	0.938	3.84	2.5	1/2	1.25	100,000

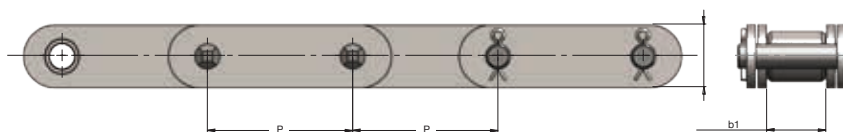
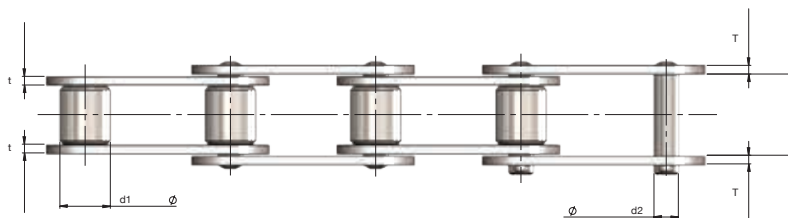
TRIMMER AND CAST CHAIN

The H78B chain is a rooftop/transfer chain made from Pearlitic Malleable Iron, and it is a readily available stock item. This heavy-duty chain is highly durable, offering exceptional quality with a tensile strength of 20,800 lbs. Our H-Series chains are specifically designed to excel in transfer conveyor systems and withstand abrasive environments. The sidebars of the H78B chain have a reinforced cross-section, providing an extra wear surface that extends the chain's service life when used in troughs or over floors and slider beds. Alongside the H78B chain, we offer a complete range of H78B sprockets.

For additional information or to request a quote, please reach out to us.



KOBO Chain	Pitch	Pin Diameter	Approx Overall	Side Bar Height	Center of Pin to Top	Ultimate Strength	Average Weight
	P	d1	L	h2	h1	Lbs	Lbs/Foot
H78	2.609	1/2	3 3/8	1.12		22,220	4.2
H78B/A	2.609	1/2	3 3/8	1	1.12	20,800	6.10
H130/138	4	1/2	3 3/8	1	1.12	19,500	5.3/5.9



Application range for 81X Chains & H78B

Transfer decks

Unscramblers

Sorters

and more...

KOBO Chain	Pitch	Roller Diameter	Pin Diameter	Approx Overall Width	Side Bar Height	Inner Side Bar Thickness	Outside Side Bar Thickness	Width Between Inner Plates	Ultimate Strength
	P	d1	d2	L	h2	t	T	b1	Lbs
81X	2.609	0.906	0.437	1.895	1.125	0.156	0.156	1.06	24,000
81XH	2.609	0.906	0.437	2.38	1.25	0.315	0.218	1.06	34,000
81XHH	2.609	0.906	0.437	5.1	1.25	0.315	0.315	1.062	43,000

SHARP TOP CHAIN

KOBO Sharp Top Chains are manufactured using premium-grade materials to ensure superior hardness, which enhances resistance to corrosion and oxidation while maintaining strength even at elevated temperatures.

Quad-staked rivet heads provide enhanced lateral strength. Solid rollers and bushings allow for faster operation and ensure precise component assembly. Solid, one-piece center plates on multi-strand standard chains prevent wood fiber compaction between plates and offer a uniform wear surface. This thicker plate also improves resistance to fatigue cracking.

Chains

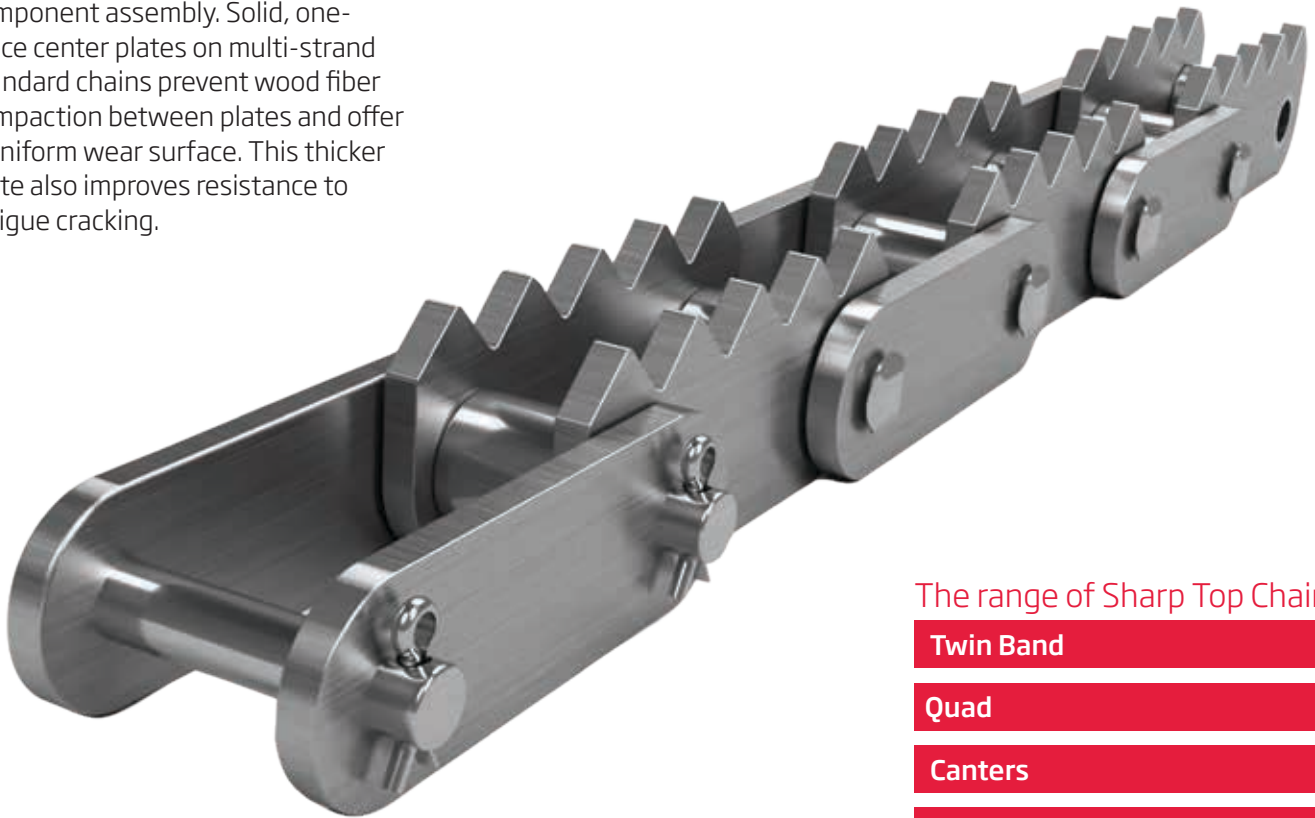
60-1ST, 60-2ST, 60-1SL, 60-2SL

80-1ST, 80-2ST, 80-3ST, 80-4ST & 80-1SL, 80-2SL, 80-3SL, 80-4SL

100-1ST, 100-2 ST, C2060HST

C32B- 1ST

and more ...



The range of Sharp Top Chains

Twin Band

Quad

Canter

and more...

SPROCKETS

KOBO HIGH-PERFORMANCE SPROCKETS AND TRACTION WHEELS

KOBO specializes in manufacturing high-performance sprockets and traction wheels, designed to meet the most demanding industrial applications. Our sprockets are engineered for precision, durability, and maximum efficiency, ensuring

smooth operation and extended service life. With the capability to produce sprockets and traction wheels in nearly any variation and up to a diameter of 5.5 feet (1700mm), we accommodate a broad variety of custom needs.

Choose KOBO for superior sprocket design, backed by decades of industry expertise and a commitment to excellence. For more information or to discuss your specific needs, contact us today.

KÖBO - EUROPE

KÖBO GmbH & Co. KG
Hatzfelder Str. 115
D-42281 Wuppertal
Tel.: +49 202 7093-0
Fax: +49 202 7093-142
E-Mail: info@koebo.com
www.koebo.com

ASIA

No. 1 Changda Road,
Hangzhou Linping Economic
and Technological
Development area,
Hangzhou, 311102, China



NORTH AMERICA

KÖBO USA LLC

370 Great SW Parkway SW
Suite H
Atlanta, GA 30336
Tel: +1 630 464 8447
E-Mail: info@kobousa.com
www.kobousa.com

BRANCH OFFICE CANADA

E-Mail: info@kobousa.com
Tel: +1 778 919 9118

SOUTH AMERICA

KÖBO DONGHUA DO BRASIL LTDA

Address: Av. Prefeito Sincler Sambatti,
594 - Jardim Itaipu, Maringá - PR
Phone: +55 44 3029-3599
+55 44 3224-2188
Website: www.kobo-donghua.com.br

BRANCH OFFICE POLAND

Köhler & Bovenkamp Polska
Polska Sp. z o.o.
88-400 Znin ul. Przemysłowa
2 woj. kujawsko-pomorskie
Tel.: +48 52 30 31 36 1
Fax: +48 52 30 31 36 4
E-Mail: marketing@koebo.pl
www.koebo.pl

BRANCH OFFICE UK

KÖBO (UK) Ltd. Ketten House
Leestone Road,
Sharston Industrial Area,
GB-Manchester, M22 4RB
Tel.: +44 (0)161 491 9840
Fax: +44 (0)161 428 1999
E-Mail: info@kobo.co.uk
www.kobo.co.uk

BRANCH OFFICE FRANCE

KÖBO France S.A.R.L.
6 rue du Chant des Oiseaux
F-78360 Montesson
Tel.: +33 1 30 15 24 50
Fax: +33 1 34 80 16 50
E-Mail: kobo.france@wanadoo.fr
www.koebo.com/fr